

## Evidence - Castor supporting plans & Policies

### Housing - A vital place to live

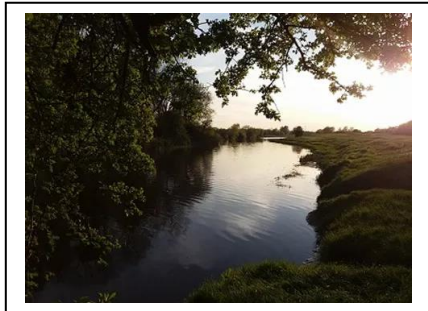
The housing growth of the village will be managed across the plan period to ensure steady growth of around 10% in dwelling numbers through the plan period, allowing for a total of some 30 new dwellings by 2036.

[National Planning Policy Framework](#)  
[Castor Village Design Statement 2004](#)  
[Design and Development in Selected Villages - Supplementary Planning Document - PCC 2011](#)  
[Peterborough Core Strategy 2011](#)  
[PCC Planning Policies DPD 2012](#)



### Land use - An ancient and fragile landscape

The Plan aims to protect and enhance the natural heritage around the village and to connect them more fully to the Nene Park Trust's land to the south and land to the north of the Parish. The landscape features connections to a medieval pre-Enclosure England and Roman occupation. We aim to protect these heritage assets across the Parish.



[National Planning Policy Framework](#)  
[Castor Village Design Statement](#)  
[Castor Conservation Area Appraisal 2009](#)  
[Langdyke Countryside Trust strategy](#)  
[Nene Park Trust Master Plan 2017 - 2050](#)  
[Scheduled Ancient Monument Record](#)  
[Making Space for Nature: A review of England's Wildlife Sites and Ecological Network \(DEFRA 2010\)](#)  
[Oldfield Pond \(2017\) - justification for protection](#)

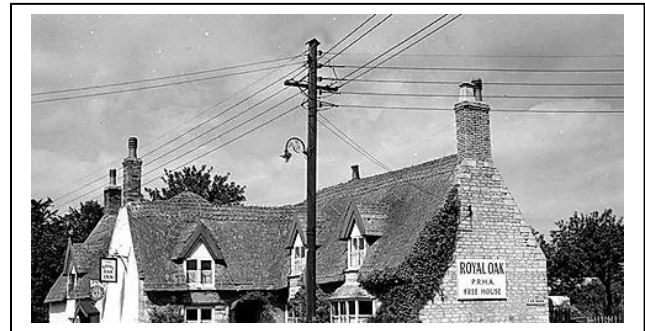
[Green Infrastructure Strategy - Peterborough City Council/James Fisher 2016](#)  
[The Distribution and Significance of Archaeological Sites - Stephen Upex 2016](#)  
[Peterborough's Green Grid Strategy 2007](#)

### Social and Economic Development - A thriving village community

Sustaining local businesses, local employment and improving local facilities remain key Plan priorities.

[CPRE - The rural economy - Policy Guidance Note 2014](#)

[Rural Vision and Parish Charter - PCC 2015](#)



### Recreation and visitors - A space for Peterborough to breathe



The Plan seeks to build on the long-standing traditions of the parish as a place for Peterborough people to visit and to enjoy the distinctive landscape, environment and wildlife and the heritage assets as well as for leisure and recreation.

[Langdyke Countryside Trust Strategy](#)  
[Nene Park Trust Master Plan 2017-2050](#)